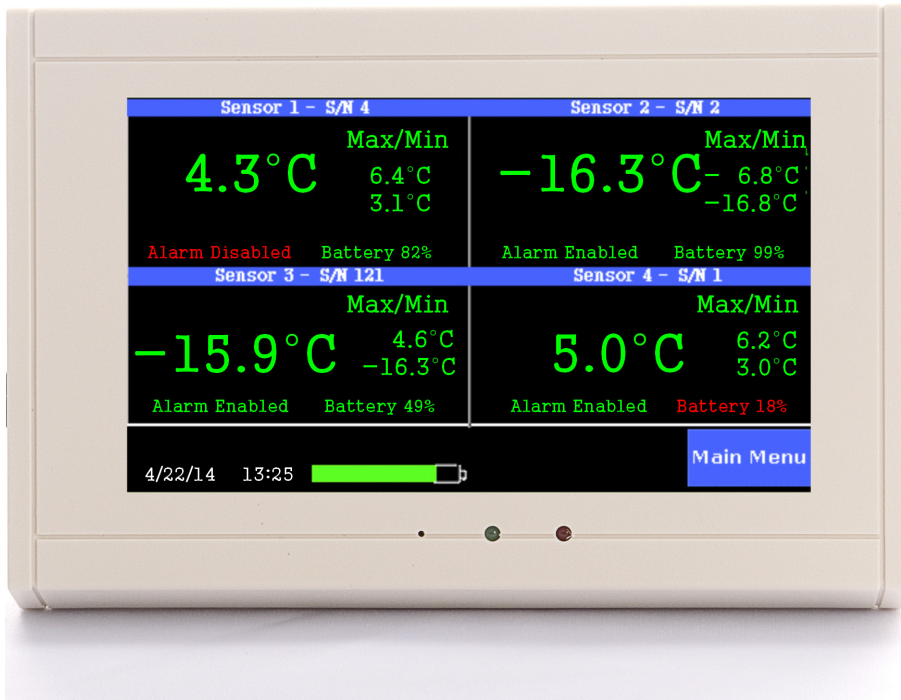




TV2 Product Summary

TV2 Refrigerator Monitor/Alarm with Easy Touch™ Display

- Easy to install and use (*installs in minutes*).
- Monitors four refrigerators or freezers
- Archives to a computer via USB or Ethernet
- Works with any refrigerator and/or freezer.
- Stores & displays over a year of temperature history
- Phone call or TXT/email alert



Quick Installation

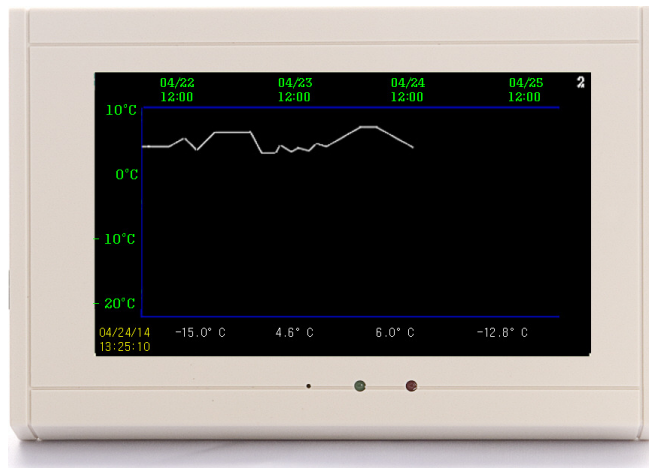
Position each sensor and set the high and low alarm points for each to be instantly notified by Phone or Text if an alarm occurs.

The ThermoViewer complies with 21 CFR 11, FDA, CDC, and JCAHO standards, storing over a year of temperature history that can be downloaded to a computer for archiving and/or a printed chart.

The display shown to the left is the status screen showing the current temperature of two refrigerators and two freezers. The maximum and minimum temperature for each is also displayed. **Just touch** any of the temperatures on the display and a chart (*see below*) will appear showing what happened last night, last week, last month or even last

year. All temperatures are logged in non-volatile memory so a chart or list of them can be seen or printed out at any time.

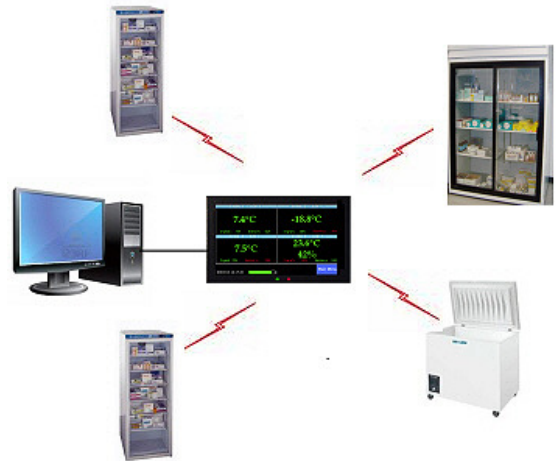
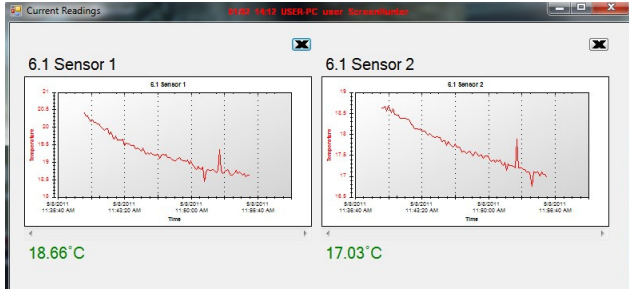
Being able to see not only the current temperature but also what it has been for the last week, month or year makes it easy to comply with regulations and trouble shoot if something does go wrong.





TV2 Product Summary

Current and historical temperatures can also be viewed on a computer with the free software. All temperatures can be automatically copied to a file on a computer through a USB port or over a local area network so that everyone can have access to them at any time.



All temperature data is encrypted with 128bit AES encryption algorithm so that it can not be changed or altered once it is collected.

Setup

The following are suggested settings for a freezer and a refrigerator.

Suggested settings for -20°C Freezer and a 4°C Refrigerator:

Chart settings

Freezer Probe #1

Sample data every 00:10:00 HHMMSS
Type of averaging: Med

Maximum Display Temperature - 5°C
Minimum Display Temperature -25°C

Refrigerator Probe #2

Sample data every 00:10:00 HHMMSS
Type of averaging: Med

Maximum Display Temperature 20°C
Minimum Display Temperature -20°C

Alarm Settings:

Sensor 1 – Temperature
Trigger relay for 00:25 MM:SS
If temperature > 5° for more than 00:30:00 HHMMSS
If temperature < -30° for more than 00:20:00 HHMMSS

Sensor 2 – Thermistor
Trigger relay for 00:25 MM:SS
If temperature > 8° for more than 00:30:00 HHMMSS
If temperature < 2° for more than 00:20:00 HHMMSS

When an alarm occurs.

Temperature and Power Alarms: An audible alarm sounds and a visual message is displayed on the ThermaViewer if a high or low temperature or power failure alarm occurs. Each of these alarms can trigger a Text or Email alert in addition to closing an external relay. The external relay can be wired to a building alarm or an auto dialer.

Each alarm is documented in an alarm log and indicated on the display. Current temperatures will be shown in red and alarm notes will be shown on the temperature history chart.

The ThermaViewer can serve up a web page of the current conditions when queried by a browser.

[Video on installing the TV2 with wireless sensors.](#)